



STRUCTURE OF THE CURE VIOLENCE APPROACH

March 2021

ROLES FOR CURE VIOLENCE IMPLEMENTATION

Main Program

Oversight Entity - Agency or organization responsible for overseeing the grant and supporting the work

- Oversight and coordination
 - Coordinate all partnerships with city agencies/ services
 - Grant and contract management
 - Fiscal management
 - Connects and convenes meetings with the city and others
- Monitoring, evaluation, and data analysis
- Support with staffing, communications, and training

Potential Oversight Entities:

- Mayor's Office (through Office of Violence Prevention or similar)
- Health Department
- Community Organization
- Foundation
- University
- Hospital

Implementing Partner- Agency or organization responsible for all aspects of implementation

- Oversight of daily site operations
- Staffing
 - Recruitment and selection
 - Human resources management
 - Staff support
 - Identification of training needs
- Data review
- Ensure impact
- Coordination of community, hospital, school partners
- Coordination of public education campaign
- Grants and contracts management
- Participation in Cure Violence training

Potential Implementing Entities:

- Community Organization
- Health Dept.
- University
- Hospital

Program Support

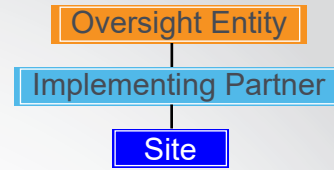
Supporting Partners (Potential Roles)

- Mayor's Office
 - Public support and advocacy
 - Potential funder
 - Support, buy-in, coordination, and services with relevant offices: Office of Neighborhoods, Employment, Housing, Parks, etc.
- Health Department
 - Potential oversight entity
 - Connection to health department services
- Hospitals
 - Implementation of HVIP
 - Connection to trauma unit
 - Access to violently injured individuals
- Law Enforcement
 - Support, buy-in, coordination, and services
 - Violent crime data
 - Group and individual analysis
 - Recruitment, hiring panel, staff review
- Faith Community
 - Support, buy-in, coordination, and services
 - Counseling for participants, families, etc.
 - Involvement in shooting responses
 - Use of facilities
 - Spread messages, support for norm change
 - Recruitment, hiring panel, staff review
- Community Leaders and Organizations
 - Support, buy-in, coordination, and services
 - Recruitment, hiring panel, staff review
 - Spread messages, support for norm change
- Parole/Probation
 - Connection to returning citizens
- Education
 - Identification of high risk conflicts and people
 - Access to school and facilities
 - School-based program

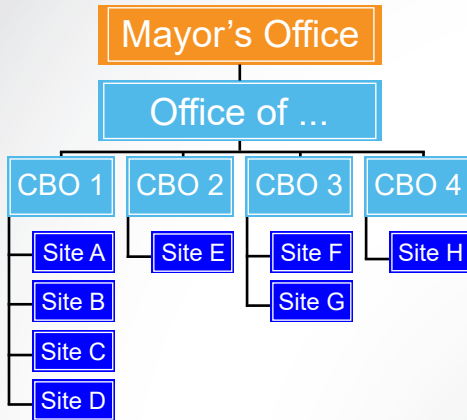
POSSIBLE ORGANIZATION CHARTS FOR CURE VIOLENCE SITES

The structure of Cure Violence adaptations can vary by city. Each city is unique, and these differences mean that what works for one city may not work for another. Cure Violence Global helps guide communities to choose the structure that will work best.

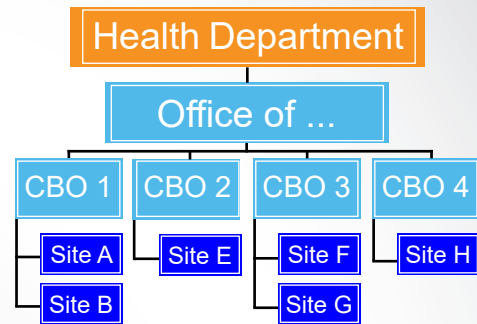
General Structure



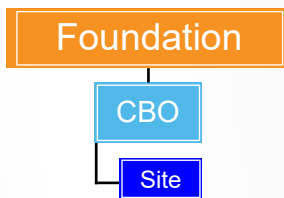
Mayor's Office Led



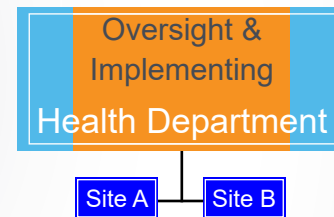
Health Department Led #1



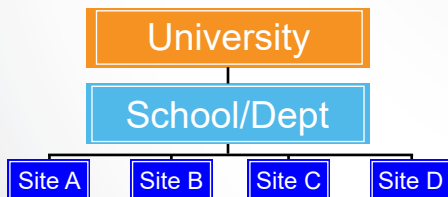
Foundation Led



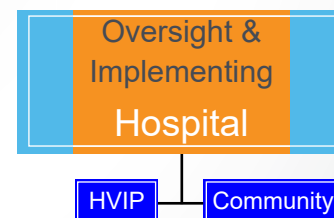
Health Department Led #2



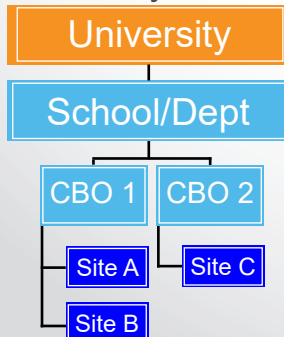
University Led #1



Hospital Led



University Led #2



CBO Led

