

# HEALTH SYSTEM to PREVENT VIOLENCE

www.violenceepidemic.org

Violence is among the most significant health problems in the United States not only because of death and injury, but also because of the harm, fear, and trauma caused to families and communities. It leads to a broad range of mental and physical health problems that disproportionately impact children, youth, and communities of color. This visual representation of a health system to prevent violence is derived from the Framework created by the Violence as a Health Issue Collaborative, which is led by David Satcher, MD, MPH; Al Sommer, MD, MHS; and Gary Slutkin, MD and includes representatives from over 40 cities, 40 national organizations, and over 400 health and community practitioners. It depicts a city-wide strategy for addressing violence of all forms as the health issue that it is with contributions from every sector. This framework is designed to guide local community organizations and agencies that can be supported by federal and state partners. Coordinated implementation of these strategies with an equity lens will work to address detrimental inequities to improve outcomes for all communities.



= Outreach workers, violence interrupters, hospital responders, and community health workers

## ENSURING AN EQUITY LENS

Ensuring greater benefit and less burden for marginalized communities by:

- Changing perceptions
- Increasing accountability
- Aligning resources in partnership with communities



### SCHOOLS OF PUBLIC HEALTH & UNIVERSITIES

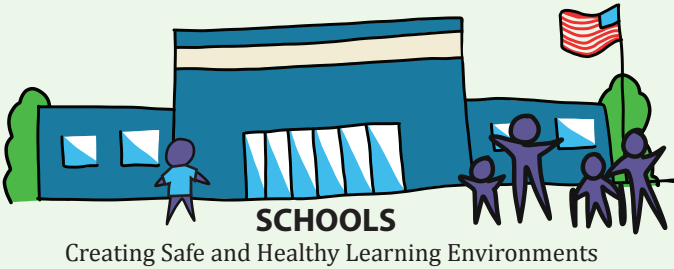
Preparing Movement Leaders with Curricula and Research

### PUBLIC HEALTH DEPARTMENTS IN PARTNERSHIP WITH ELECTED OFFICIALS

Coordinating and Developing Interventions

### HOSPITALS AS ANCHOR INSTITUTIONS

Ensuring Quality Care, Outreach and Follow Up



#### SCHOOLS

Creating Safe and Healthy Learning Environments



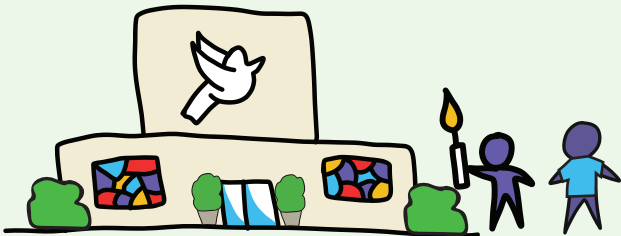
#### MENTAL HEALTH

Promote Accessibility for Greater Well-Being



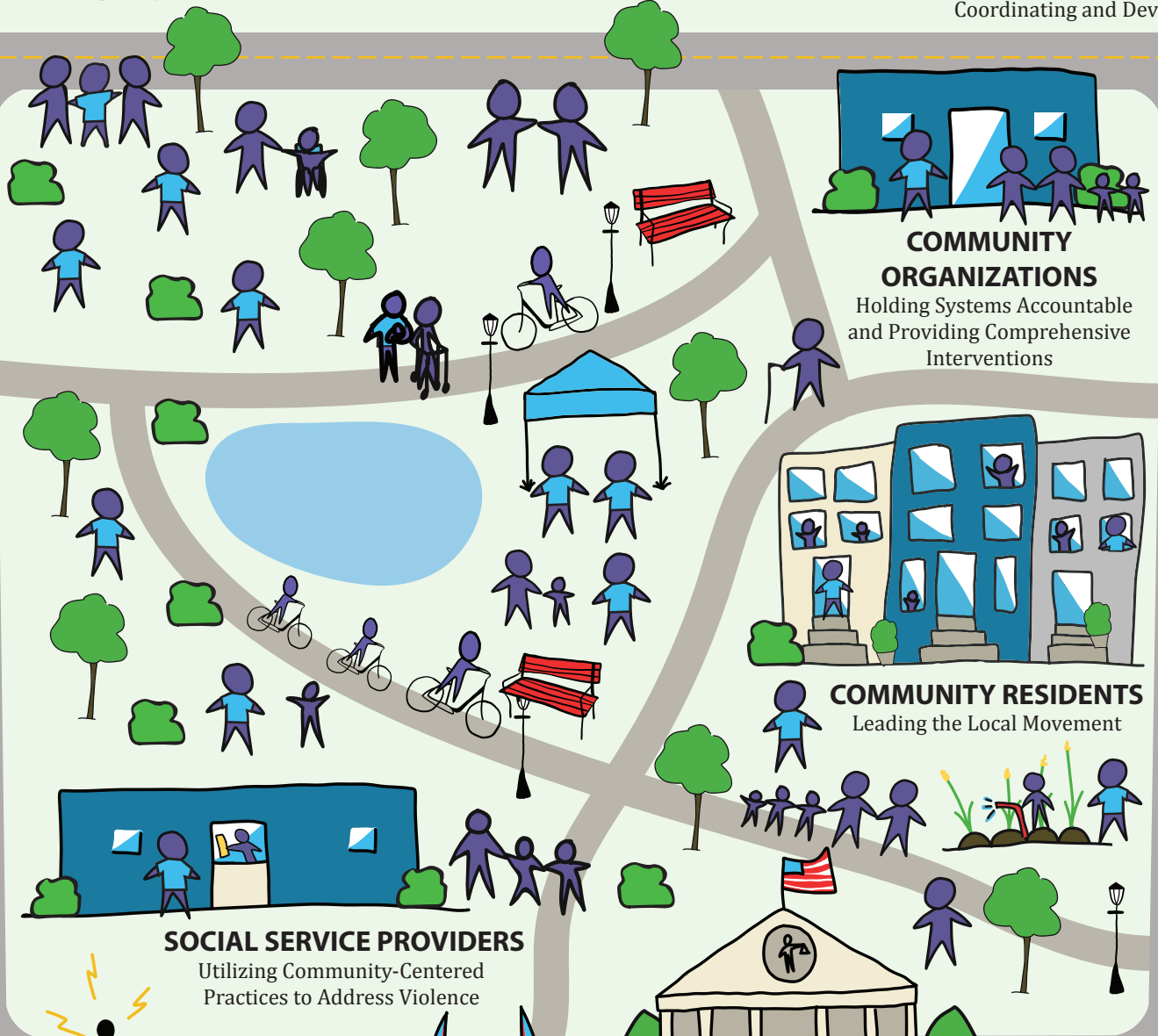
#### ACADEMIC MEDICAL CENTERS

Advancing Research on Violence Prevention



#### FAITH-BASED INSTITUTIONS

Educating and Healing Communities



#### COMMUNITY ORGANIZATIONS

Holding Systems Accountable and Providing Comprehensive Interventions

#### COMMUNITY RESIDENTS

Leading the Local Movement

#### SOCIAL SERVICE PROVIDERS

Utilizing Community-Centered Practices to Address Violence

#### COMMUNITY INFORMATION SYSTEMS

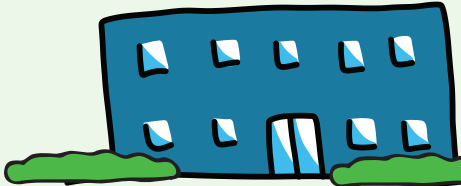
Monitoring Trends of Violence Nationwide

#### LAW ENFORCEMENT AND THE JUSTICE SYSTEM

Supporting Public Health Contributions and Ensuring Accountability Towards a Healthy/Equitable System

#### EMERGENCY DEPARTMENTS AND ACUTE CARE FACILITIES

Identifying and Supporting Individuals and Families at Risk



#### HEALTH CARE SYSTEM

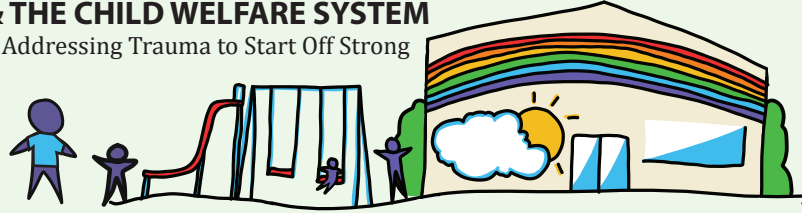
Incorporating Violence Prevention in Economics and Policy

#### BEHAVIORAL HEALTH CARE

Providing Trauma-Informed Services for Improved Outcomes

#### EARLY CHILDHOOD DEVELOPMENT CENTERS & THE CHILD WELFARE SYSTEM

Addressing Trauma to Start Off Strong



#### PRIMARY CARE

Establishing a Safe Environment and Making Connections

#### MEDIA

Changing to a Health Narrative